

Rubber Molded Wellhead Feedthru

2 piece system



A Solution for Limited Wellhead Space

Adaptable to wellheads with longer tubing hangers and smaller well casing sizes, where minimal space exists below the tubing hanger.

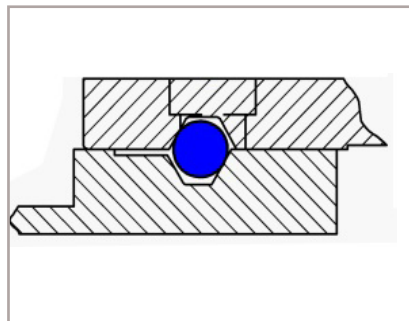
Ball bearing coupling ring on surface connectors	Provides high reliability, makes installation easier, and increases safety of the connector
Replaceable sealing elements on surface connectors.	Allows for safe surface connector re-use, saving time and money.
Lower ESP cable is integrally sealed to the electrical feedthru at the factory.	Solves clearance problems below the tubing hanger when there is insufficient space available for a lower connector.

Safe and Easy to Use

These feedthrus are most commonly installed from below the tubing hanger, and secured above with a retention nut. With a separable surface connector on top, work-overs are fast and easy. The Rubber Molded 2-Piece System is a vulcanized elastomeric system, recognized for superior performance.

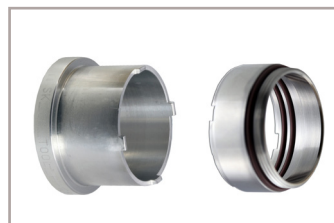


Rubber molded Wellhead Feedthru: surface and penetrator



The Surface Connectors are supplied with coupling rings retained by ball bearings. This retention method ensures longer life, better resistance to corrosion, and easier engagement.

The Surface Connectors are also supplied with replaceable sealing elements. These seals consist of O-rings that are easily replaced with a special tool, making re-use both easy and safe.



Specification Chart

Electrical	5 kV, up to 215 A
Temperature	300 °F (149 °C)
Pressure	3,000 psi and 5,000 psi models
Approvals	Approved for C1, Div 1, Groups C & D Hazardous Locations, USA and Canada. ATEX and IEC for Hazardous Locations